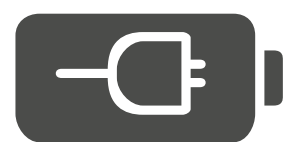


SUSTAINABLE TRANSPORTATION



How UCI employees can utilize sustainable transportation while working...

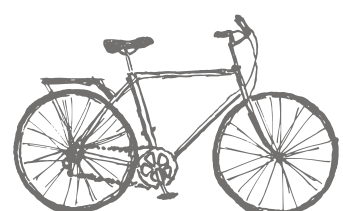
ON CAMPUS



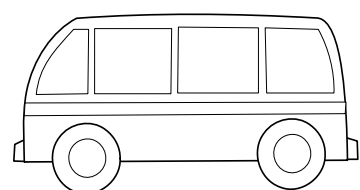
UCI has more than **180 electric vehicle charging stations**. Charge your car while working! [See locations here.](#)



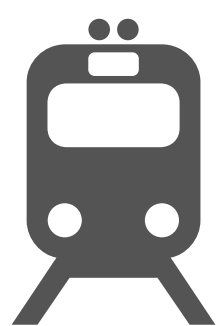
Utilize employee carpool programs. Split the cost of parking with other carpool participants! [Learn more here.](#)



Need a place to park your bike for the work day? **UCI has more than 3,000 bike rack spaces.** [Locate them here.](#)



Interested in joining a campus vanpool? **UCI vanpools operate throughout Southern California.** [Find your next vanpool here.](#)

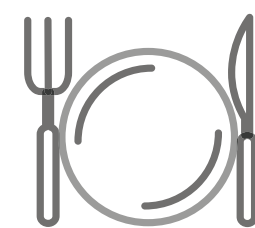


Rebates on Metrolink and Amtrak train tickets are provided for employees who use the train to commute to campus. [Learn more here.](#)

REMOTELY FROM HOME



At home, try adding a **15 min walk into your daily schedule to replace your commute** and create a clear division for the start of your workday.



On your way to pick-up lunch? **Support a local restaurant in walking or biking distance to your home.** Great for the environment and economy!

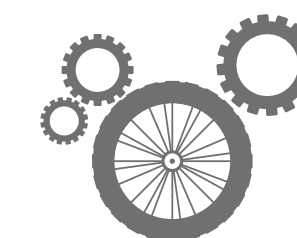
Did You Know?

UCI created the **Pump2Plug program**, one of the first university incentive programs to encourage campus employees to convert from gasoline-powered vehicles to electric and plug-in vehicles. Participants receive three years of free Level 1 charging and reduced-cost Level 2 charging. [Learn more here!](#)

ON CAMPUS OR REMOTELY



Interested in learning essential cycling skills? **UCI offers the League of American Bicyclist's Smart Cycling course.** [Sign-up for the complimentary 2-part seminar here.](#)



Would you like to share the joys of cycling with others? **Participate in the volunteer BikeUCI Ambassador Program** to become a certified bike educator.



Have a meeting? **Utilize video conferencing when possible to reduce vehicle emissions.**



UCI supports telecommuting as a zero-emission commute mode. Employees may be eligible to receive participation incentives, including [complimentary occasional-use campus parking permits.](#)